

# CATHOLIC CHARITIES OF SOUTHEAST TEXAS

## 2016 Annual Report

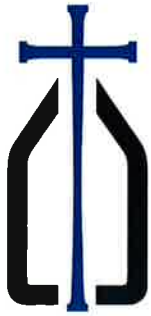


*providing help. creating hope.*

### OUR MISSION

People of faith responding to needs by serving, teaching, building community, and preserving the dignity of individuals and families in Southeast Texas.

# Program Highlights



Catholic Charities of Southeast Texas serves low-to-moderate income residents of a nine-county territory that includes Chambers, Hardin, Jasper, Jefferson, Liberty, Newton, Orange, Polk, and Tyler counties. Services are provided without regard to race, gender, age, national origin, or religious affiliation.

## Clients Served

Program	Fiscal Year 2015-2016	Fiscal Year 2014-2015
Asset Building Case Management	384	346
Counseling Services	176	156
Disaster Response/Emergency Assistance	1,608	607
Elijah's Place	83	81
Hospitality Center	2,069	1,980
Immigration Services	1,032	953
<b>Total Unduplicated Clients Served:</b>	<b>5,316</b>	<b>4,100</b>



The work highlighted above was made possible through 809 volunteers who contributed 16,126 hours of service in collaboration with the 19 staff members of the agency.

# Financial Summary

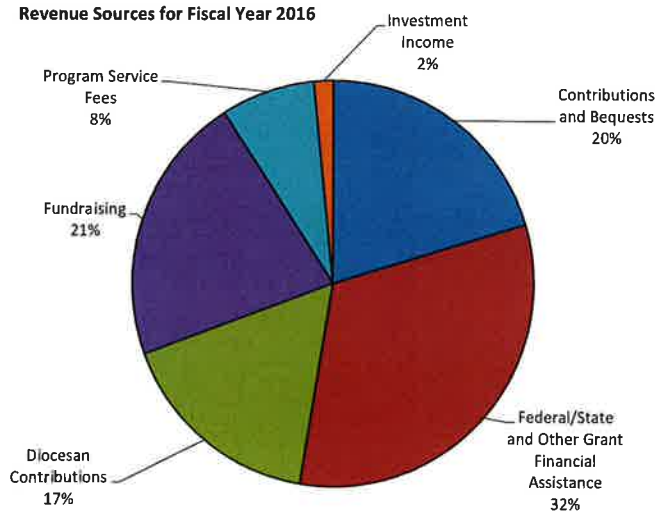
## Catholic Charities of Southeast Texas

### Statement of Activities

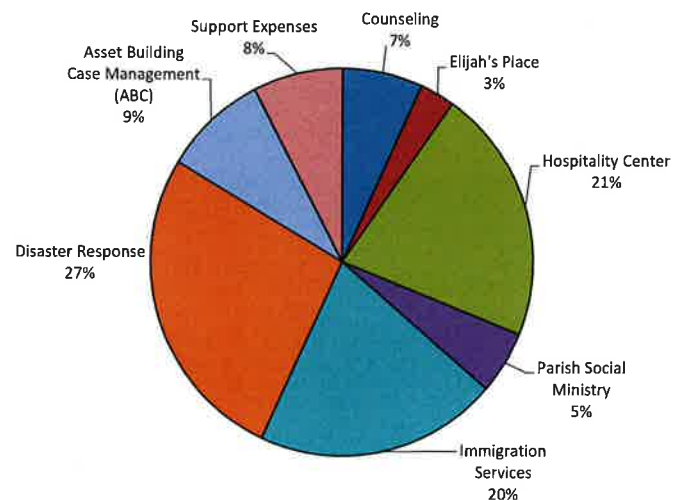
For the Years Ended June 30, 2016 and 2015

	2016	2015
Contributions & Bequests	\$388,214	\$66,204
Federal/State and Other Grant Financial Assistance	617,228	478,991
Diocesan Contributions	320,000	320,000
Fundraising	411,849	399,680
Program Service Fees	144,275	130,679
Investment Income	30,100	33,244
Gain from sale of assets <sup>1</sup>	2,415	
Plant Management		1,493
<b>Total Revenue:</b>	<b><u>\$1,914,081</u></b>	<b><u>\$1,428,798</u></b>
Counseling	\$104,070	\$101,754
Elijah's Place	45,648	41,547
Hospitality Center	326,990	265,398
Parish Social Ministry	80,404	101,789
Immigration Services	314,817	315,633
Disaster Response	410,084	399,732
Asset Building Case Management (ABC)	135,090	102,326
Support Expenses	<u>116,444</u>	<u>101,470</u>
<b>Total Expenses<sup>2</sup></b>	<b><u>\$1,533,547</u></b>	<b><u>\$1,429,649</u></b>
<b>Increase/(Decrease) in Net Assets:</b>	<b><u>\$380,534</u></b>	<b><u>(\$851)</u></b>
<b>Net Assets at beginning of year:</b>	<b>\$3,215,657</b>	<b>\$3,216,508</b>
<b>Net Assets at end of year</b>	<b><u>\$3,596,191</u></b>	<b><u>\$3,215,657</u></b>

Revenue Sources for Fiscal Year 2016



Expenditure Categories for Fiscal Year 2016



<sup>1</sup> Gain from sale of assets represents less than 1% of total revenue.

<sup>2</sup> Certain 2015 expenses were reclassified among the departments and are reflected in this report. Total expenses for 2015 remain unchanged from previous report.

# 2016 Board of Directors

Jeff Oliverio, Chair  
Donna Wade, Vice Chair  
Shawn Oubre, Treasurer  
David Mulcahy, Secretary

Tom Broussard  
Bill Darling  
Linda Domino  
Todd Fontenot  
Kara Hawthorn  
Garry LeBlanc

Mandy Mazzola  
John Morrell  
Chris Richardson  
Gerri Giglio Talbot  
Sabrina Vrooman  
Regina Winegar  
Tommy Yeates

## PROGRAM DESCRIPTIONS

**Asset Building Case Management (ABC)** combines financial education with long-term case management, helping families develop spending plans, repair their credit, increase their savings and make progress toward home ownership or continued education. Free income tax preparation and matched savings accounts are also services available to eligible clients.

**Counseling Services** provides individual, family and group counseling via a sliding fee scale.

**Disaster Response** provides financial assistance and long-term case management to help families rebuild their lives after major disasters. Emergency assistance is also provided for families facing a temporary financial crisis.

**Elijah's Place** gives peer and adult support to children ages 5 - 18 who are grieving the death of a parent or sibling.

**The Hospitality Center** provides a clean, safe and dignified environment where those with limited resources have access to a hearty, midday meal every day of the year.

**Immigration Services** is the only regional nonprofit recognized by the Board of Immigration Appeals and U.S. Citizenship and Immigration Services as a provider of immigration legal services such as family visa petitions, naturalization applications, and self-petitions for battered immigrants.

**Parish Social Ministry** lends support and training resources to local church leaders and members working to organize social justice advocacy teams and social ministry services.



FAITHFULLY SERVING SOUTHEAST TEXAS

[www.catholiccharitiesbmt.org](http://www.catholiccharitiesbmt.org)

2780 Eastex Freeway

(409) 924-4400 phone

(855) 924-4400 toll free

(409) 832-0145 fax



[facebook.com/  
catholiccharitiesofsoutheasttexas](https://facebook.com/catholiccharitiesofsoutheasttexas)